

Fiber Connect Panel (FCP3)

Regional Availability - International

Siemon's popular Fiber Connect Panels (FCP3-DWR and FCP3-RACK) economically connect, protect, and manage up to 72 fibers in 1U (up to 288 fibers with MTP to MTP adapters). It accepts Siemon's Quick-Pack® adapter plates with patented single-finger access. The FCP3-DWR makes access to the connections easy via a fixed tray that can be released and slid out of the front or rear of the enclosure.

Lanced Tabs

Provide convenient cable anchor points for incoming jacketed fiber cable.

Up to 3 Optional Splice Trays

Can be mounted to manage and protect either mechanical or fusion splices.

Rear Fiber Clips

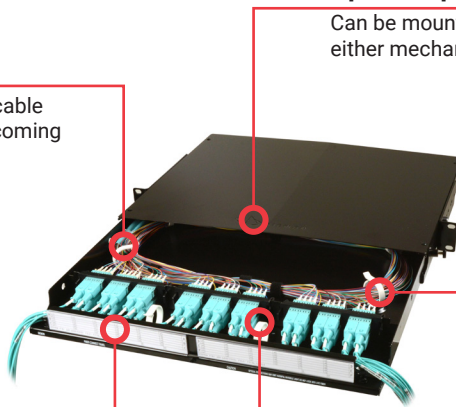
Manage cable slack while maintaining minimum bend radius requirements.

Label Holder

Protects fiber jumpers and is readily removable via release of factory-installed snap-latches.

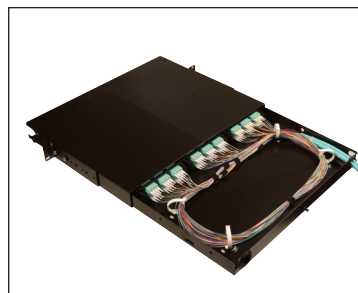
Front Fiber Clips

Manage up to 36 duplex fiber jumpers (72 fibers total) or 24-, 12-fiber MTP trunks.



High Density

FCP3 enclosures accommodate up to 72 fibers (288 with MTP adapter plates) in only 1U.



Sliding Tray

The FCP3-DWR (drawer version) features a tray that slides out from the front or rear, providing easy access to fiber connections. The entire tray can be removed and placed on a work table for more convenience.

Product Information

Maximum FCP3 Fiber Capacity

# Fibers per Quick-Pack	Adapter Options	FCP3
6	ST, SC	18
8	ST, SC	24
12	ST, SC, LC	36
16	LC	48
24	LC	72
96	MTP	288

Maximum Splicing Capacity

Splice Type	FCP3
Fusion	72

Ordering Information

Fiber Connect Panel (FCP3)

Part #	Description
FCP3-DWR	6- to 72-fiber (up to 288 fibers with MTP adapter plates) Fiber Connect Panel with sliding tray, accepts (3) Quick-Pack® adapter plates, 1U, black. Includes mounting brackets, housing/tray, fiber managers, grommets, label holders, and labels Height: 43.2mm (1.7 in.) Width: 482.6mm (19.0 in.) Depth: 355.6mm (14.0 in.)
FCP3-RACK	6- to 72-fiber (up to 288 fibers with MTP adapter plates) Fiber Connect Panel with fixed tray, accepts (3) Quick-Pack adapter plates, 1U, black. Includes mounting brackets, housing/cover, fiber managers and grommet Height: 43.2mm (1.7 in.) Width: 482.6mm (19.0 in.) Depth: 241.3mm (9.5 in.) Note: 1U = 44.5 mm (1.75 in.)

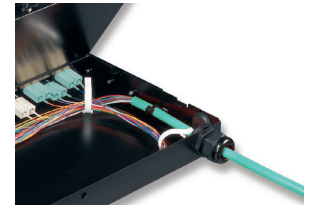


Compression Fittings

Compression fittings are utilized as an enhanced method for securing cables to FCP3 fiber enclosures. Acme threads on the body prevent skipping, allowing for faster installations of lock-nuts.

Part #	Description
CF-(XX)	Compression fitting

Use (XX) to specify fiber diameter:
 40 = 5.8 - 13.9mm (0.22 in. - 0.5 in.)
 51 = 11.4 - 18.0mm (0.44 - 0.7 in.)
 60 = 15.0 - 25.4mm (0.59 - 1.0 in.)



Ordering Information

Splice Trays (XGLO® and LightSystem®)

These aluminum trays come with a clear, snap-on polycarbonate cover and can be stacked for highdensity applications. The standard tray holds up to 24 splices. The mini-tray for use with the SWIC3, accommodates up to 12 splices.

Part #	Description
TRAY-3	Standard splice tray for up to 24 fusion splices with sleeve protection. For use with RIC3 and FCP3 fiber enclosures
TRAY-M-3	Mini splice tray for up to 12 fusion splices with sleeve protection



TRAY-3

Standard Tray Dimensions
 Height: 103mm (4.0 in.)
 Width: 298mm (11.7 in.)
 Depth: 8.13mm (0.32 in.)



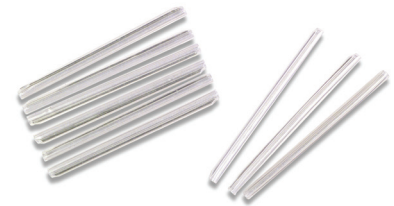
TRAY-M-3

Mini Tray Dimensions
 Height: 103mm (4.0 in.)
 Width: 179mm (7.04 in.)
 Depth: 8.13mm (0.32 in.)

Heat Shrink Sleeves

Heat shrink sleeves provide a safe and efficient method for protecting fusion splices on either 250 or 900 micron coated fibers. Heat shrink sleeves are threaded on to fibers prior to fusion splicing and then positioned directly over splice and heated via an oven or heat gun.*

Part #	Description
HT-40	40mm (1.57 in.) Heat shrink sleeve
HT-60	60mm (2.36 in.) Heat shrink sleeve



*Heating times may vary depending on heat source.

Ordering Information

Quick-Pack® Adapter Plates

Siemon's patented Quick-Pack adapter plates feature an integrated latch, which provides single-finger access to fiber even in fully populated enclosures.

XGLO® & LightSystem®

Part Number	Description
RIC-F-SC6-01	3 duplex SC adapters (6 fibers)
RIC-F-SCQ6-01	3 duplex SC adapters (6 fibers), aqua adapters (not shown)
RIC-F-SCE6-01	3 duplex SC adapters (6 fibers), erika violet adapters (not shown)



Part Number	Description
RIC-F-SC8-01	4 duplex SC adapters (8 fibers)
RIC-F-SCQ8-01	4 duplex SC adapters (8 fibers), aqua adapters (not shown)
RIC-F-SCE8-01	4 duplex SC adapters (8 fibers), erika violet adapters (not shown)



Part Number	Description
RIC-F-SC12-01	6 duplex SC adapters (12 fibers)
RIC-F-SCQ12-01	6 duplex SC adapters (12 fibers), aqua adapters (not shown)
RIC-F-SCE12-01	6 duplex SC adapters (12 fibers), erika violet adapters (not shown)



Part Number	Description
RIC-F-L(X)12-01C	3 quad LC adapters (12 fibers), beige adapters (not shown)
RIC-F-L(X)U12-01C	3 quad LC adapters (12 fibers), blue adapters (not shown)
RIC-F-L(X)Q12-01C	3 quad LC adapters (12 fibers), aqua adapters
RIC-F-L(X)E12-01C	3 quad LC adapters (12 fibers), erika violet adapters



Part Number	Description
RIC-F-L(X)16-01C	4 quad LC adapters (16 fibers), beige adapters (not shown)
RIC-F-L(X)U16-01C	4 quad LC adapters (16 fibers), blue adapters (not shown)
RIC-F-L(X)Q16-01C	4 quad LC adapters (16 fibers), aqua adapters
RIC-F-L(X)E16-01C	4 quad LC adapters (16 fibers), erika violet adapters



Ordering Information

Part Number	Description
RIC-F-L(X)24-01C	6 quad LC adapters (24 fibers), beige adapters (not shown)
RIC-F-L(X)U24-01C	6 quad LC adapters (24 fibers), blue adapters (not shown)
RIC-F-L(X)Q24-01C	6 quad LC adapters (24 fibers), aqua adapters
RIC-F-L(X)E24-01C	6 quad LC adapters (24 fibers), erika violet adapters



(X) = C:Standard LC Adapter S:Shuttered LC Adapter

Optional Shuttered LC adapters feature a small plastic shutter door that opens upon insertion without touching the connector endface and springs back into the closed position upon removal to ensure protection of empty ports.



LightSystem®

Part Number	Description
RIC-F-SA6-01	3 duplex ST adapters (6 fibers)



Part Number	Description
RIC-F-SA8-01	4 duplex ST adapters (8 fibers)



Part Number	Description
RIC-F-SA12-01	6 duplex ST adapters (12 fibers)



Part Number	Description
RIC-F-BLNK-01	Blank adapter plate



Only recommended for push-pull ST connectors due to limited access

Each adapter plate with icon pockets includes red, blue, black, and clear icons with paper labels. All SC and ST adapters are "universal" to support Multimode and Singlemode.

Because we continuously improve our products, Siemon reserves the right to change specifications and availability without prior notice.

North America P: (1) 860 945 4200	Asia Pacific P: (61) 2 8977 7500	Latin America P: (571) 657 1950/51/52	Europe P: (44) 0 1932 571771	China P: (86) 215385 0303	India, Middle East & Africa P: (971) 4 3689743
---	--	---	--	-------------------------------------	--

Siemon Interconnect Solutions
P: (1) 860 945 4213
www.siemon.com/SIS